



FEI™

JUMPING

FEI Online Invitation System

Pilot phases and next steps



Pilot Phases

Statistics

FEI Online Invitation System – Pilot Phases

2 pilot phases in 2018 – Week 23 and Week 49

WEEK 23

12 events using the system

2 CSI5*

2 CSI4*

3 CSI3*

5 CSI2*

4 events not using the system

1 CSI5*

1 CSI4*

0 CSI3*

2 CSI2*

WEEK 49

4 events using the system

1 CSI5*

1 CSI4*

0 CSI3*

2 CSI2*

3 events not using the system

0 CSI5*

0 CSI4*

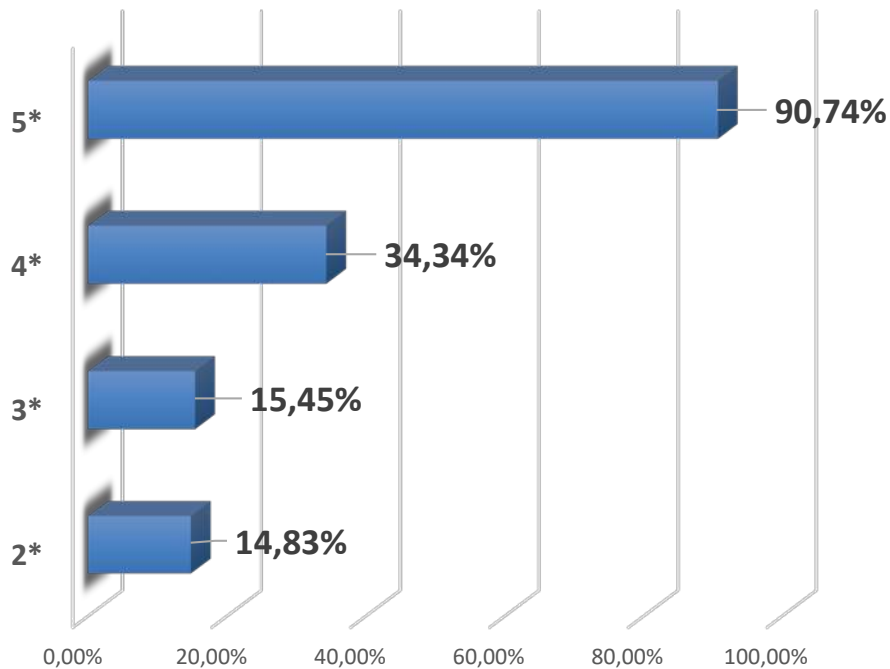
0 CSI3*

3 CSI2*

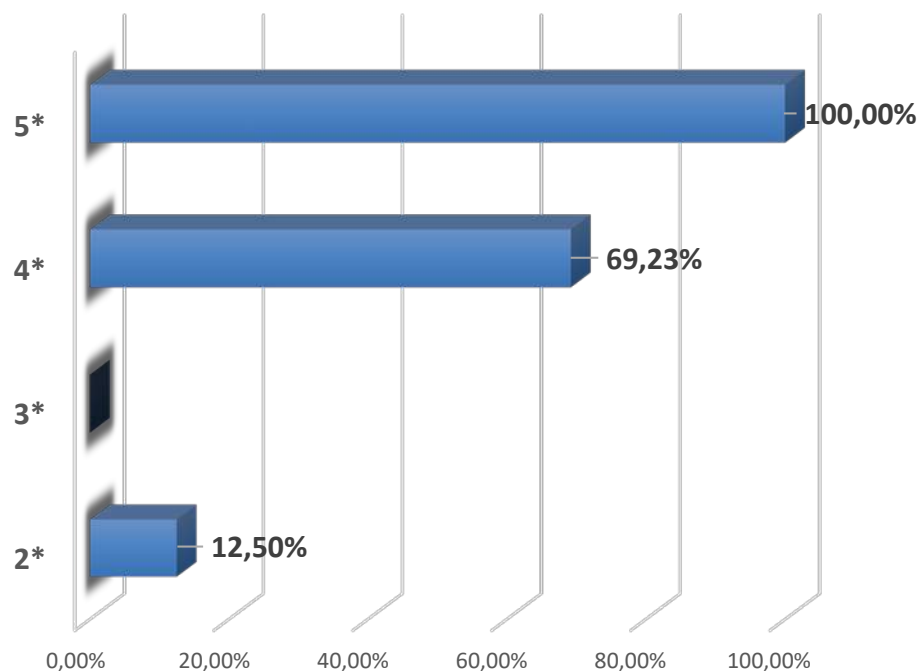
Acceptation of invitations according to level

Average percentage of accepted invitations per event level

WEEK 23



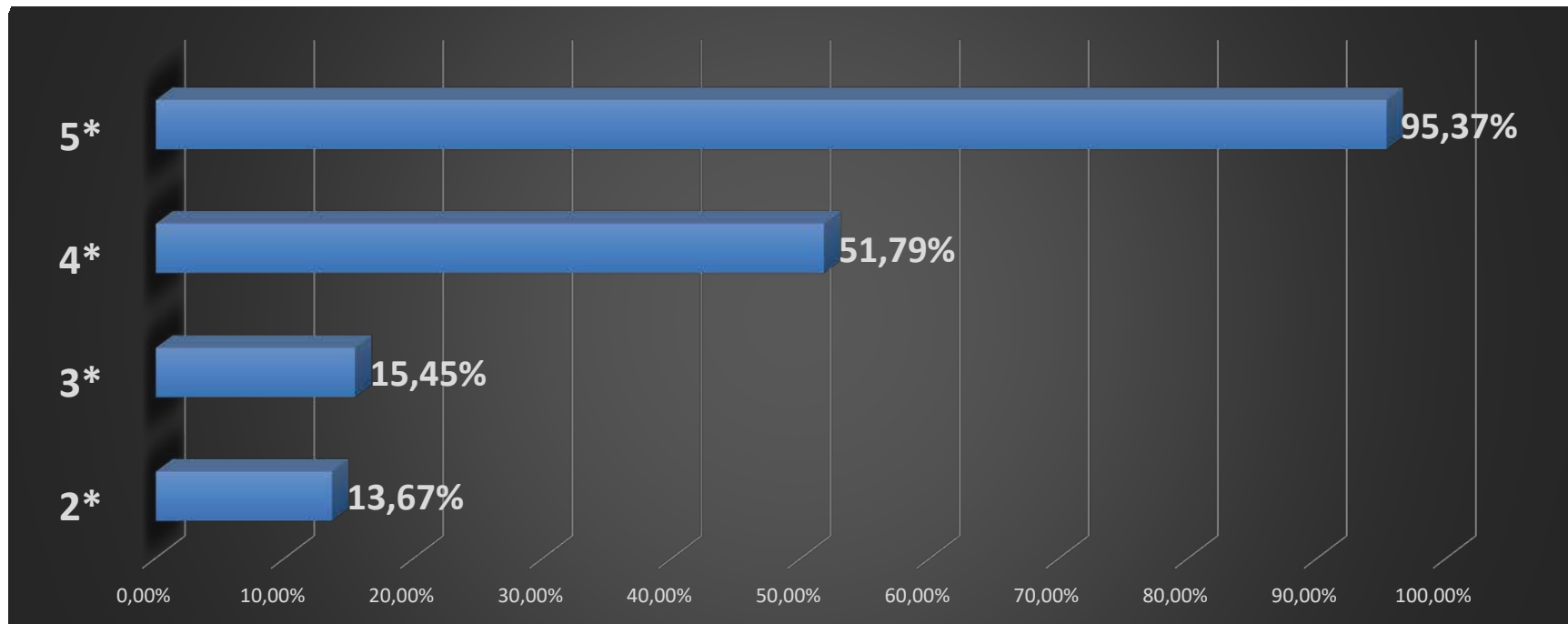
WEEK 49



Acceptation of invitations according to level

Average percentage of accepted invitations per event level

WEEK 23 and WEEK 49



1st and 2nd Pilot Phase figures

WEEK 23 and WEEK 49

	Accepted invitations	Lost invitations	Total available invitations
5*	70	5	75
4*	46	58	104
3*	17	93	110
2*	29	140	169
TOTAL	162	296	458

There were 2 CSIs where 0 invitations were used

There were 5 other CSIs where less than 5 invitations were used



Pilot Phases

Analysis

FEI Online Invitation System – Analysis

National Federations have understood the system well and have provided good and constructive feedback

The FEI Invitation System is working very well from a technical point of view

The current implementation of the CSI Invitation Rules in the online system is working correctly for the top level events

FEI Online Invitation System – Analysis

The current method/implementation of the CSI Invitation Rules in the FEI Online Invitation System does not invite enough athletes lower down the Longines Ranking (only inviting down to rank 350/400)

This means that athletes wanting an invitation for a CSI3* or CSI2* event are not invited within the current 6 week invitation period, as most of them are ranked lower down than 400 (only 14.5 % of invitations distributed for CSI2* and CSI3* are used)

The current timeline is challenging for Chef d'Equipes to select Nations Cup riders.
Top ranked athletes are accepting invitations for other events 7/8 weeks prior to the event.



FEI Invitation System

Next steps

What do we need to adjust ?

Guarantee an invitation and opportunity to participate for all ranked athletes

SOLUTION -> Adjust the method to distribute invitations

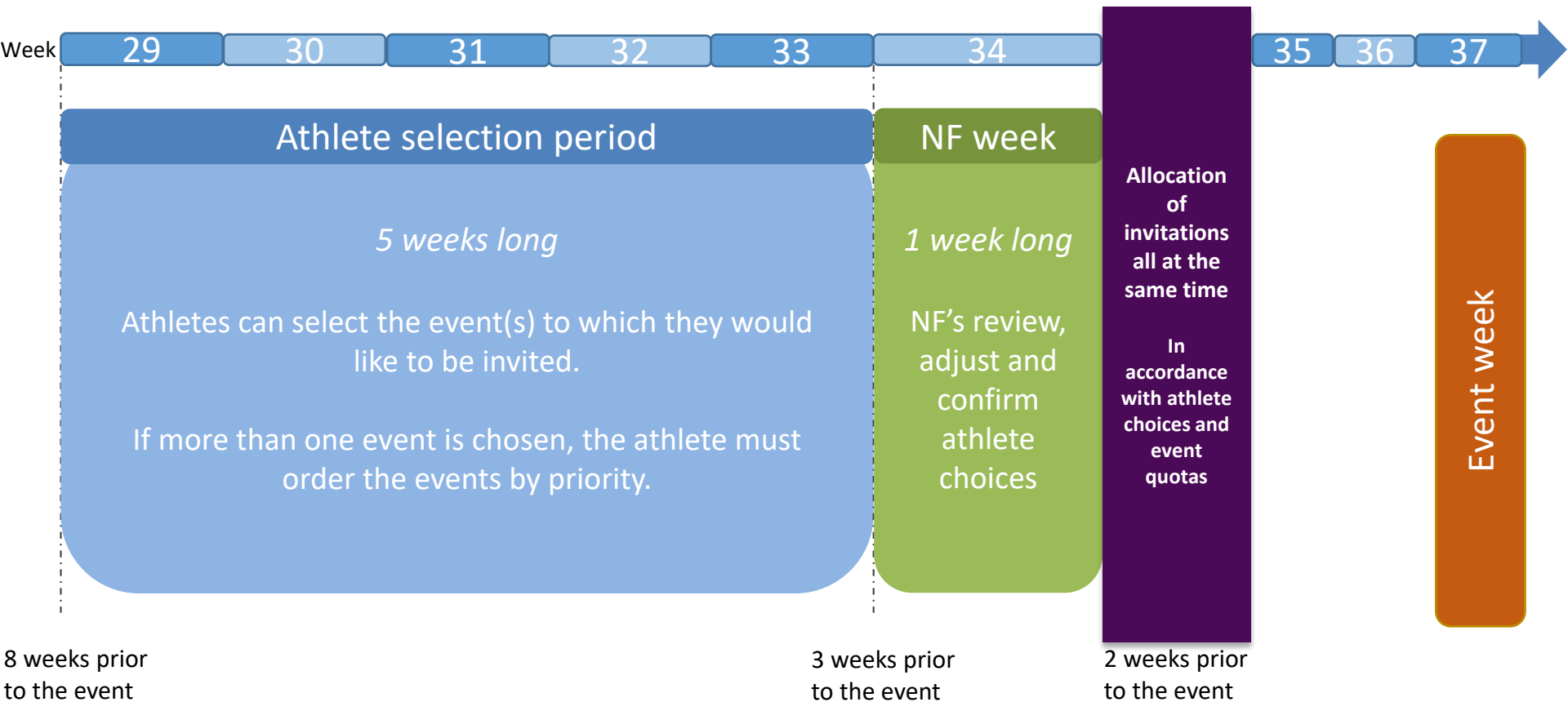
CURRENT Current system – FEI active process – FEI sends invitations to athletes

Actual model is based on a sequential approach, where athletes and NFs have to perform actions within a given time frame in order to allow the distribution of the next invitations in descending order

PROPOSAL Proposed system – Athletes active process – Athletes apply for events

Future model should give all athletes and NFs a time frame which is long enough to choose and set priorities for the event(s) they wish to be invited to

INVITATION SYSTEM PROCESS IN DETAILS



ROLES & RESPONSIBILITIES

ATHLETE – ROLES & RESPONSIBILITIES

DURING
ATHLETE
SELECTION
PERIOD

CHOOSE THE EVENT(S) THEY WOULD LIKE TO BE INVITED TO

ORDER THOSE EVENTS BY PRIORITY

ATHLETE
RESPONSIBILITY

BEFORE DEADLINE

ROLES & RESPONSIBILITIES

NATIONAL FEDERATION – ROLES & RESPONSIBILITIES

DURING
ATHELTE
SELECTION
PERIOD

CHOOSE AND ORDER EVENTS ON BEHALF OF ATHLETES

DURING NF
PERIOD

REVIEW, ADJUST AND CONFIRM ATHLETE CHOICES

MANUALLY CONFIRM

AUTO CONFIRM

PER EVENT LEVEL

PER WEEK

PER ATHLETE

FEI Online Invitation System

What is not changing

National Federations remain the only stakeholder who decide entries of athletes

Overall timeframe for invitations is similar

Invitation quotas are not changing

FEI Online Invitation System

What are the next steps ?

1

Adjust the workflows of the system as presented

2

Run further pilot phases in 2019

3

Implement FEI Online Invitation System in 2020



THANK YOU